



2 Hereford Road, London, E3

BUTLER & STAG



Smart and very well presented one bedroom apartment set within this purpose built modern development in vibrant Bow, close to Mile End underground station.

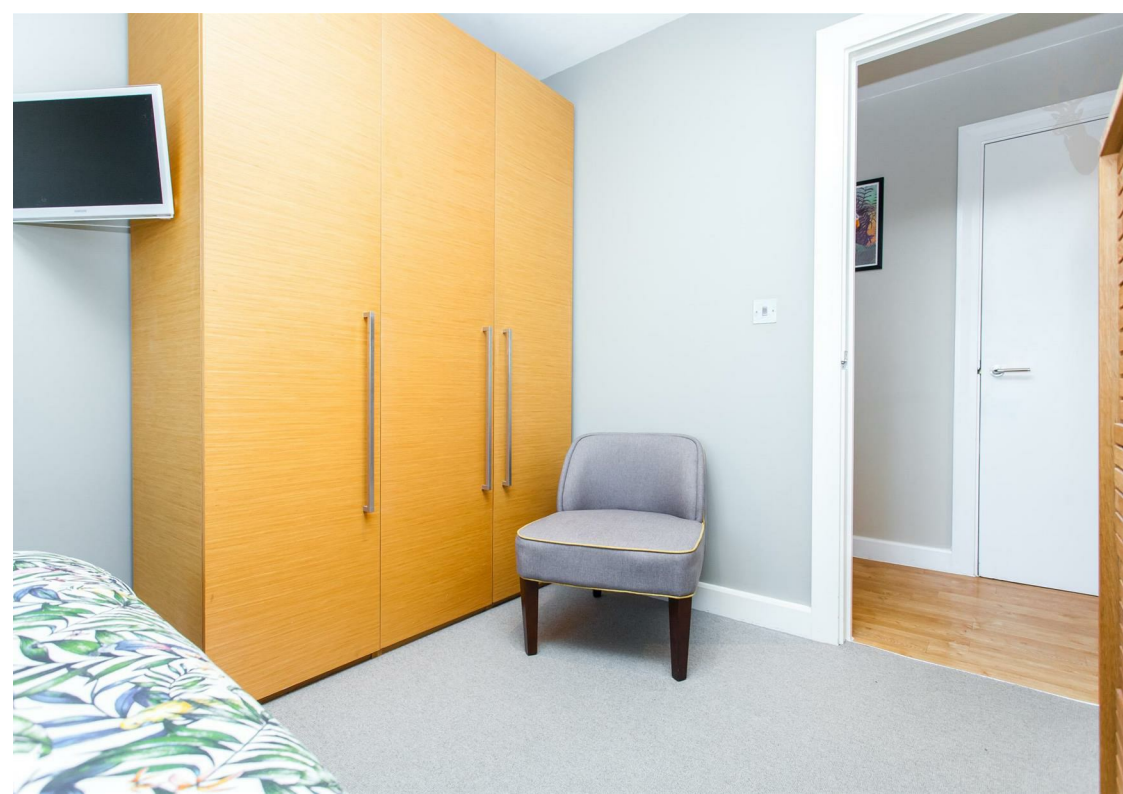


- One Bedroom Apartment
- Well Presented Throughout
- Secure Gated Development
- Sought After Bow Location
- Furnished
- Available 23rd August 2023

Accessed via security entrance with lift, the accommodation is just under 600 square foot and comprises of a fully integrated recessed kitchen, including dishwasher, washing machine and dryer. Spacious living room with modern furnishings and a stunning contemporary bathroom suite with double walk-in shower.

The apartment also benefits from communal satellite TV connection and is well located for the amenities of Roman Road and the wonderful Victoria Park. There are several transport links nearby with Mile End underground, Bow Church DLR and Bow Road underground all easily accessible.

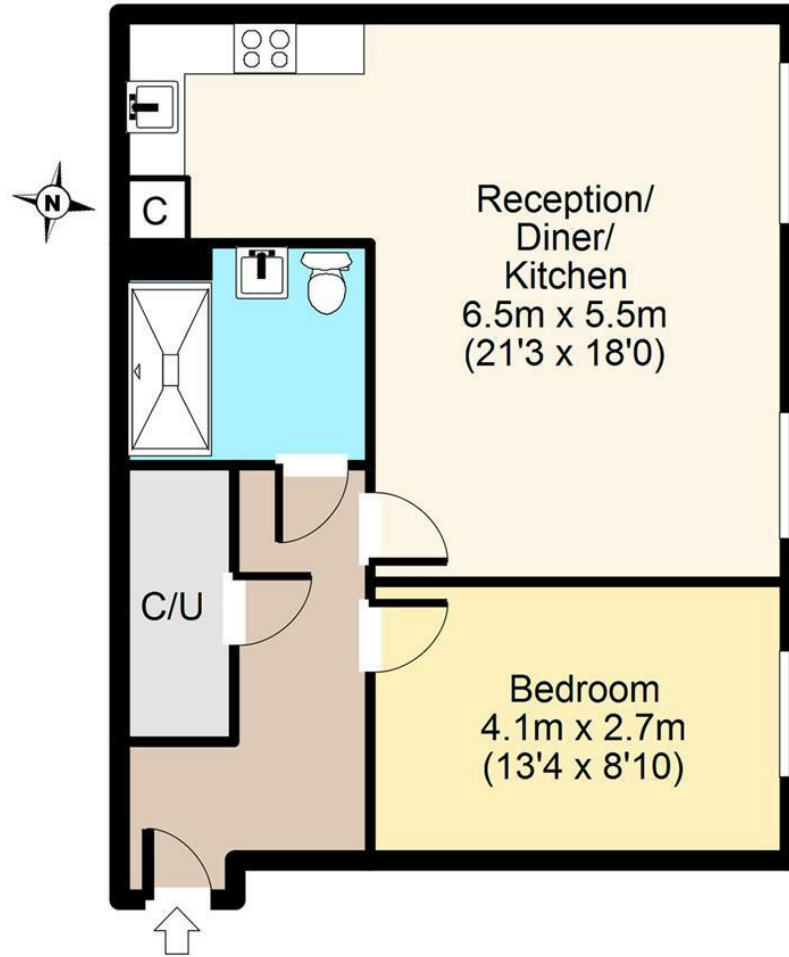




Hereford Rd, E3

First Floor

Approx. 54 sq. meters (578 sq. feet)



Total area: approx. 54 sq. meters (578 sq. feet)
For illustration purposes only - not to scale

BUTLER & STAG

☎ 020 8102 1236

🏠 508 Roman Road, Bow, London, E3 5LU

✉ bow@butlerandstag.com

www.butlerandstag.uk

IMPORTANT NOTICE - These particulars have been prepared in good faith and they are not intended to constitute part of an offer or contract. We have not performed a structural survey on this property and the services, appliances and specific fittings have not been tested. All photographs, measurements, floor plans and distances referred to are given as a guide and should not be relied upon.